

# Multi stick for aquarium owners

**Pack content:**

1 aluminium container with 100 (REF 913 26) or 25 (REF 913 27) strips

**General indications:**

Remove only as many test strips as are required. Close the container immediately after removing a strip. Do not touch the test fields.

**Instructions for use:**

1. Dip the test stick with all test fields into the test solution for 1 s (do not hold under flowing water)
2. Shake off excess liquid.
3. Wait 60 s.
4. Compare test fields with the color scale.

**Evaluation of the water quality:**

The term „total hardness“ in water refers to its content of calcium and magnesium salts. A value that suits most ornamental fish lies between 5 °d and 10 °d (conversion factors: 1 °d = 1.8 °f = 1.25 °e = 17.8 mg/L CaCO<sub>3</sub>).

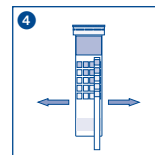
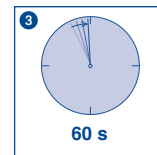
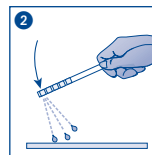
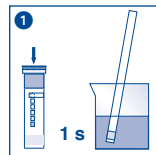
Carbonate hardness is part of the total hardness and is caused by the content of alkali earth metals, which is equivalent to the carbonate and hydrogen carbonate ions present in water. Carbonate hardness indicates thus the „buffering capacity“ of water. If the carbonate hardness of water is low, its buffering capacity cannot be kept stable: the pH may fluctuate and endanger the fish. The ideal carbonate hardness value lies between 2 °d and 4 °d (conversion factors: 1 °d = 1.8 °f = 1.25 °e = 17.8 mg/L CaCO<sub>3</sub>).

The pH value indicates if water is acidic, alkaline or neutral. Water with a pH of 7 is considered to be neutral. The lower the pH value, the more acidic water becomes, and towards higher pH values it becomes more alkaline. The ideal pH value for most freshwater aquariums lies between 6.4 and 6.9. If the values for total hardness, carbonate hardness and pH deviate from the ranges indicated above, please contact your aquatic & pet store for advice.

**Storage:**

Avoid exposing the strips to sunlight and moisture. Keep container cool and dry (storage temperature not above +30 °C).

If correctly stored, the test strips may be used until the use-by-date printed on the packaging.



|     |   |     |  |
|-----|---|-----|--|
| REF | Artikelnummer / Item number / Référence produit / Referencia / Artikelnummer / Numero di catalogo / Numer artykułu  | LOT | Chargencode / Batch identification / Numéro de lot / Código de lote / Productionnummer / Codice del lotto / Numer partii   |
|     | Achtung! / Warning! / Attention! / ¡Atención! / Let op! / Attenzione! / Uwaga!  |     | Verwendbar bis / Use by / À utiliser avant / Fecha de caducidad / Te gebruiken tot / Utilizzare entro (anno / mese) / Przydatność do użycia  |
|     | Temperaturbegrenzung / Permitted storage temperature range / Limites de température / Limites de temperatura / Temperatuurbegrenzing / Limite de temperatura / Ograniczenie temperatury   |     | Trocken aufbewahren / Store in a dry place / Conserver au sec / Mantener seco / Op een droge plaats bewaren / Mantere asciutto / Przechowywać w suchym miejscu   |
|     | Gebrauchsanweisung beachten / Please read instructions for use / Respecter les instructions d'utilisation / Obsérvense las instrucciones de uso / Lees de bijsluiter / Consultare le istruzioni per l'uso / Przestrzegać instrukcję użycia  |     | Packung geschlossen halten / Keep container closed / Refermer la boîte / Mantenga el envase cerrado / Verpakking gesloten houden / Conservare la confezione chiusa / Przechowywać pojemnik szczelnie zamknięty |
|     | Ausreichend für <n> Prüfungen / Contains sufficient for <n> tests / Contenu suffisant pour <n> tests / Contenido suficiente para <n> tests / Voldoende voor <n> tests / Contenuto sufficiente per <n> test / Wystarczająco dla kontroli <n> |     |  |